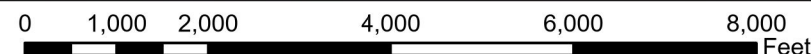
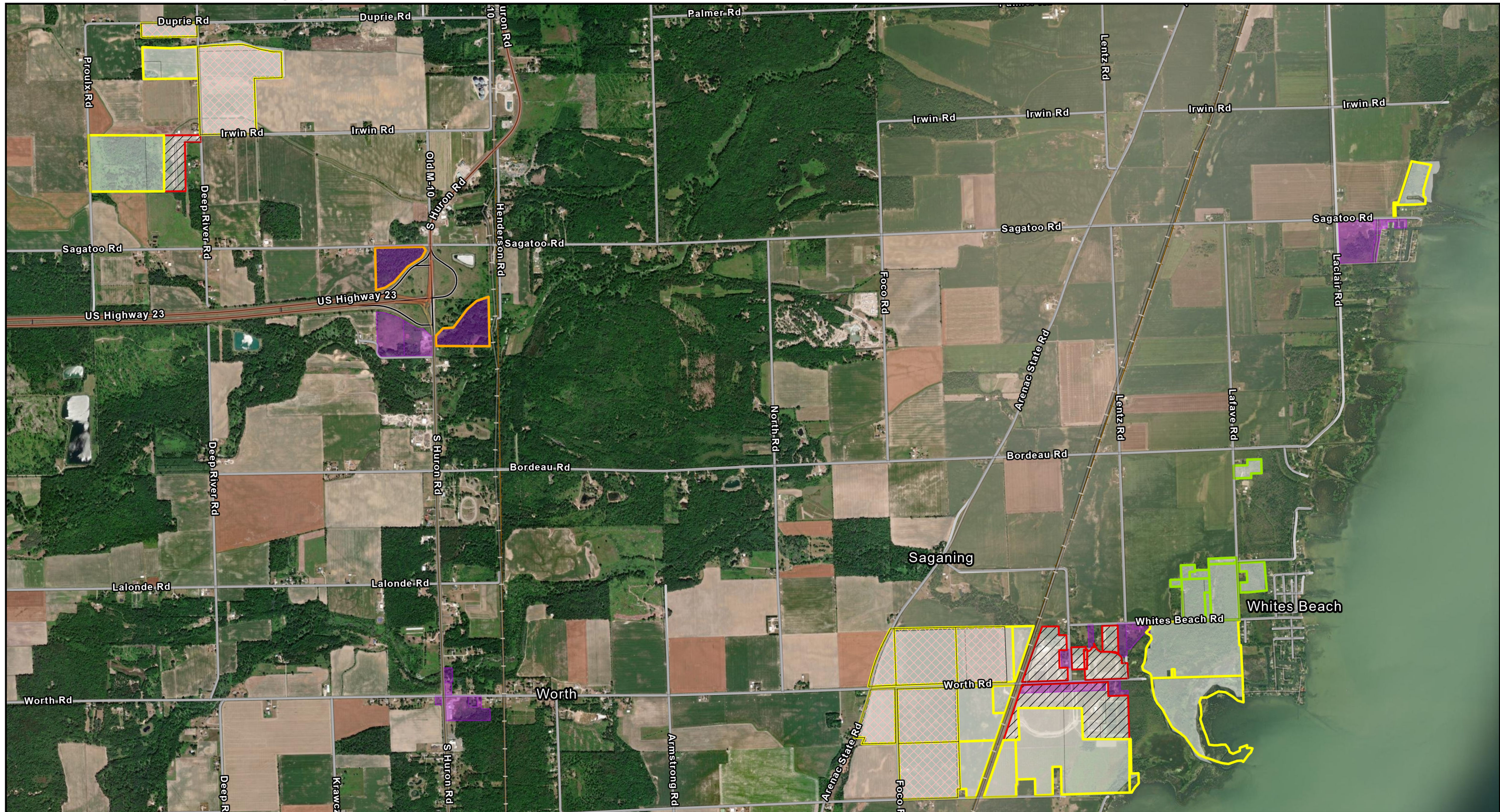


EXHIBIT F– Arenac County Open Lands Bow and Gun Season



<b>SCIT Parcels</b>	<b>Hunting Zones</b>	Open MI Permit
Land In Trust	No Hunting	Bow & Shotgun
Non Trust	Open	*Farm Leased

(\*Permission required until harvest)

# Deer Season 2024 (Nov.1st - Feb.1st)

## SCIT Members Hunting Areas Saganing



The Saginaw Chippewa Indian Tribe makes no warranty expressed or implied, regarding the accuracy, completeness or usefulness of the information presented. Users of this information assume all liability of its fitness for a particular use.

